

**IL8 Antibody (C-term)**  
**Purified Rabbit Polyclonal Antibody (Pab)**  
**Catalog # AP8612B****Specification**

---

**IL8 Antibody (C-term) - Product Information**

Application	FC, IF, IHC-P, WB,E
Primary Accession	<a href="#">P10145</a>
Reactivity	Human
Host	Rabbit
Clonality	Polyclonal
Isotype	Rabbit IgG
Antigen Region	72-99

**IL8 Antibody (C-term) - Additional Information****Gene ID** 3576**Other Names**

Interleukin-8, IL-8, C-X-C motif chemokine 8, Chemokine (C-X-C motif) ligand 8, Emotakin, Granulocyte chemotactic protein 1, GCP-1, Monocyte-derived neutrophil chemotactic factor, MDNCF, Monocyte-derived neutrophil-activating peptide, MONAP, Neutrophil-activating protein 1, NAP-1, Protein 3-10C, T-cell chemotactic factor, MDNCF-a, GCP/IL-8 protein IV, IL8/NAP1 form I, Interleukin-8, (Ala-IL-8)77, GCP/IL-8 protein II, IL-8(1-77), IL8/NAP1 form II, MDNCF-b, IL-8(5-77), IL-8(6-77), (Ser-IL-8)72, GCP/IL-8 protein I, IL8/NAP1 form III, Lymphocyte-derived neutrophil-activating factor, LYNAF, MDNCF-c, Neutrophil-activating factor, NAF, IL-8(7-77), GCP/IL-8 protein V, IL8/NAP1 form IV, IL-8(8-77), GCP/IL-8 protein VI, IL8/NAP1 form V, IL-8(9-77), GCP/IL-8 protein III, IL8/NAP1 form VI, CXCL8, IL8

**Target/Specificity**

This IL8 antibody is generated from rabbits immunized with a KLH conjugated synthetic peptide between 72-99 amino acids from the C-terminal region of human IL8.

**Dilution**

FC~~1:10~50

IF~~1:10~50

IHC-P~~1:10~50

WB~~1:1000

E~~Use at an assay dependent concentration.

**Format**

Purified polyclonal antibody supplied in PBS with 0.09% (W/V) sodium azide. This antibody is prepared by Saturated Ammonium Sulfate (SAS) precipitation followed by dialysis against PBS.

**Storage**

Maintain refrigerated at 2-8°C for up to 2 weeks. For long term storage store at -20°C in small aliquots to prevent freeze-thaw cycles.

**Precautions**

IL8 Antibody (C-term) is for research use only and not for use in diagnostic or therapeutic

procedures.

## IL8 Antibody (C-term) - Protein Information

**Name** CXCL8

**Synonyms** IL8

**Function** Chemotactic factor that mediates inflammatory response by attracting neutrophils, basophils, and T-cells to clear pathogens and protect the host from infection (PubMed:[18692776](#), PubMed:[7636208](#)). Also plays an important role in neutrophil activation (PubMed:[2145175](#), PubMed:[9623510](#)). Released in response to an inflammatory stimulus, exerts its effect by binding to the G-protein-coupled receptors CXCR1 and CXCR2, primarily found in neutrophils, monocytes and endothelial cells (PubMed:[1840701](#), PubMed:[1891716](#)). G-protein heterotrimer (alpha, beta, gamma subunits) constitutively binds to CXCR1/CXCR2 receptor and activation by IL8 leads to beta and gamma subunits release from Galpha (GNAI2 in neutrophils) and activation of several downstream signaling pathways including PI3K and MAPK pathways (PubMed:[11971003](#), PubMed:[8662698](#)).

**Cellular Location**

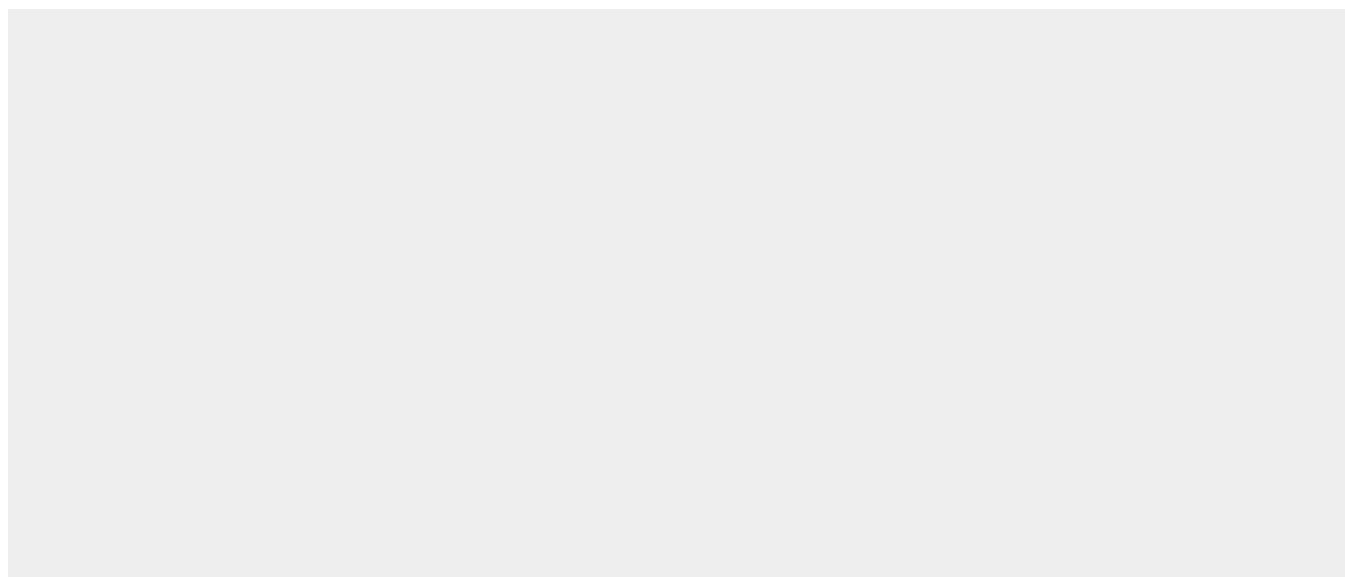
Secreted.

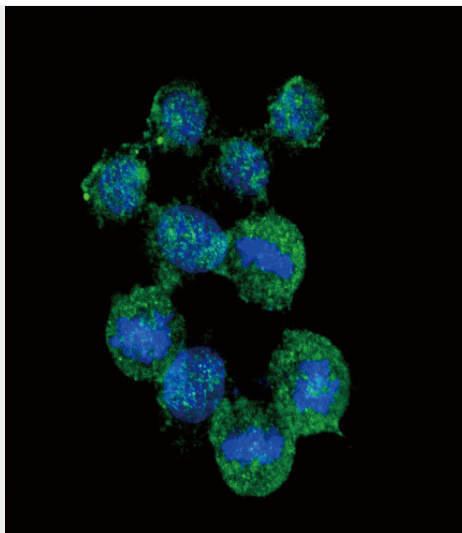
## IL8 Antibody (C-term) - Protocols

Provided below are standard protocols that you may find useful for product applications.

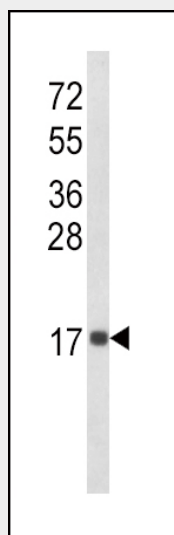
- [Western Blot](#)
- [Blocking Peptides](#)
- [Dot Blot](#)
- [Immunohistochemistry](#)
- [Immunofluorescence](#)
- [Immunoprecipitation](#)
- [Flow Cytometry](#)
- [Cell Culture](#)

## IL8 Antibody (C-term) - Images

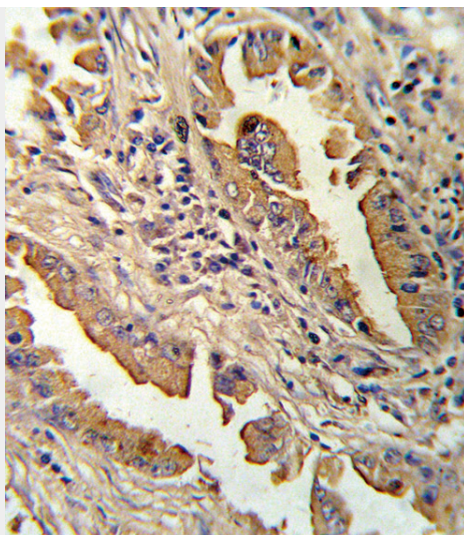




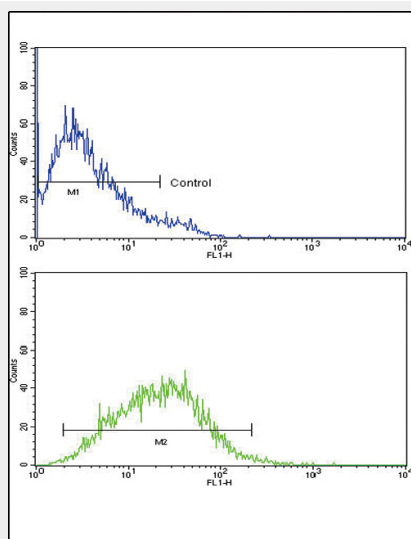
Confocal immunofluorescent analysis of IL8 Antibody (C-term)(Cat. #AP8612b) with HeLa cell followed by Alexa Fluor<sup>®</sup>488-conjugated goat anti-rabbit IgG (green). DAPI was used to stain the cell nuclear (blue).



Western blot analysis of IL8 Antibody (C-term) (Cat. #AP8612b) in MDA-MB468 cell line lysates (35ug/lane). IL8 (arrow) was detected using the purified Pab.



Formalin-fixed and paraffin-embedded human lung carcinoma reacted with IL8 Antibody (C-term), which was peroxidase-conjugated to the secondary antibody, followed by DAB staining. This data demonstrates the use of this antibody for immunohistochemistry; clinical relevance has not been evaluated.



IL8 Antibody (C-term) (Cat. #AP8612b) flow cytometric analysis of CEM cells (bottom histogram) compared to a negative control cell (top histogram). FITC-conjugated goat-anti-rabbit secondary antibodies were used for the analysis.

### IL8 Antibody (C-term) - Background

IL8 is a member of the CXC chemokine family. This chemokine is one of the major mediators of the inflammatory response. This chemokine is secreted by several cell types. It functions as a chemoattractant, and is also a potent angiogenic factor.

### IL8 Antibody (C-term) - References

Baggiolini, M. et al., FEBS Lett. 307 (1), 97-101 (1992)  
Holmes, W.E., et al., Science 253 (5025), 1278-1280 (1991)

### IL8 Antibody (C-term) - Citations

- [Upregulated expression of HOXB7 in intrahepatic cholangiocarcinoma is associated with tumor cell metastasis and poor prognosis.](#)

- [Interleukin-8 upregulates integrin  \$\beta\$ 3 expression and promotes estrogen receptor-negative breast cancer cell invasion by activating PI3K/Akt/NF- \$\kappa\$ B pathway.](#)
- [Gankyrin activates IL-8 to promote hepatic metastasis of colorectal cancer.](#)